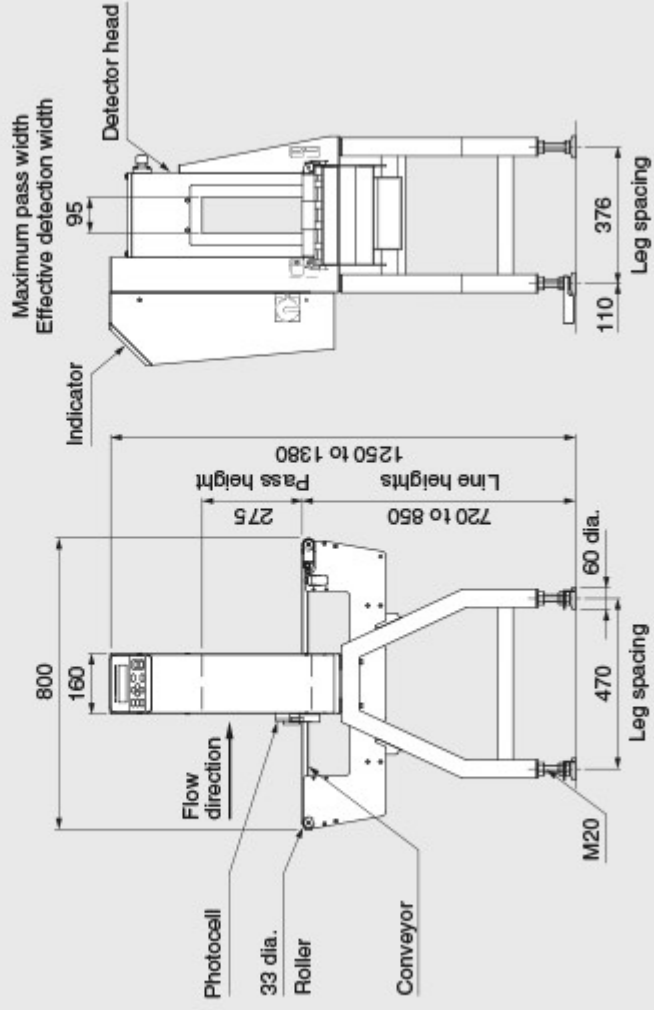
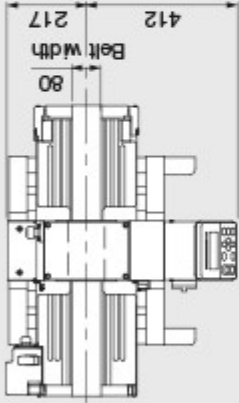


# KD8113AWT



Units : mm

## ■ Specifications

Model	KD8113AWT	
Pass height	275 mm	
Maximum pass width	95 mm	
Detection sensitivity <sup>1</sup>	Fe sphere	0.5 mm dia
	SUS304 sphere	0.8 mm dia
Belt width	80 mm	
Display	STN LCD	
Operation method	Flat panel key	
Preset memory	Maximum 100	
Belt speed	10 to 90 m/min (variable speed depending on Product No.)	
Maximum product weight <sup>2</sup>	5 kg [AWT (Waterproof) types can support up to 15 kg. However, the belt speed is 5 to 49 m/min]	
Power requirements	100 to 120 Vac +10% -15% or 200 to 240 Vac +10% -15%, single phase, 50/60 Hz, 200 VA, rush current 62 A (typ.) (20 ms or less)	
Mass	82 kg	
Environmental conditions	0° to 40° C, relative humidity 30% to 85%, non-condensing	
Protection class	IP66 compliance	
Exterior	Stainless steel (SUS304)	
Data output	USB port as an option (USB2.0), Ethernet interface as an option (10BASE-T, 100BASE-TX)	

1: Detection sensitivity for actual use may vary depending the type of contaminants, the physical property of product (temperature of goods, content, and shape).

2: Sum total of product weight on the conveyor.

## Detection areas

Each series features a variety of detection areas to suit a wide range of products. For details of specifications, please submit an online inquiry form.

		Pass height (mm)	
Non-waterproof type		280	430
Waterproof type		275	425
Pass width (mm)	95	⊙	/
	115	/	⊙
	135	⊙	/
	145	/	⊙
	195	⊙	⊙