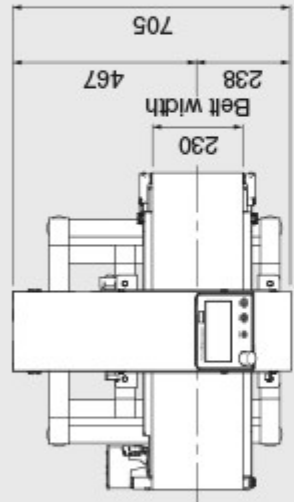
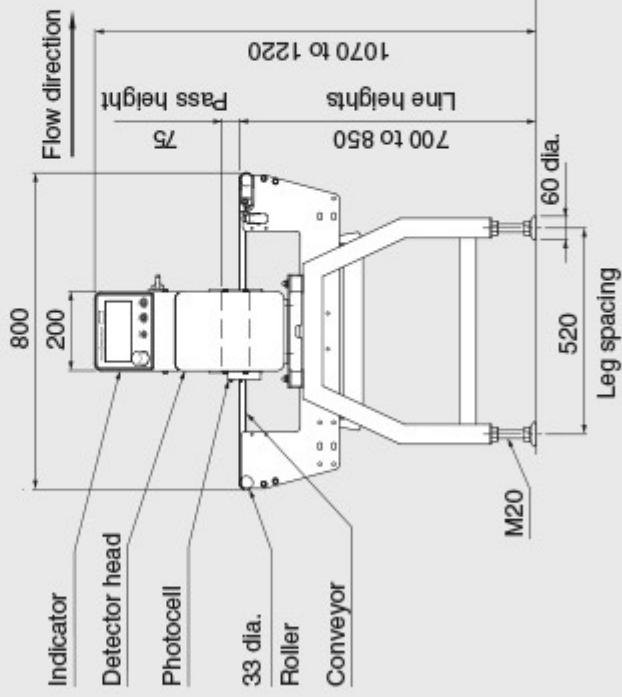
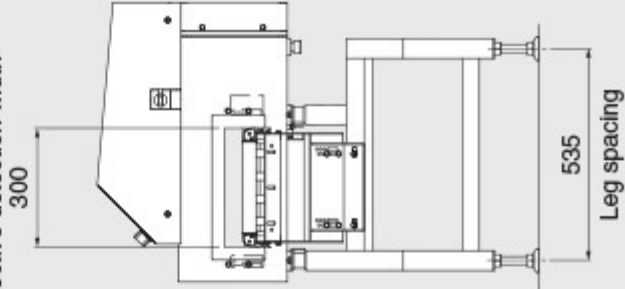


# KDS8113BW



Maximum pass width  
Effective detection width



Units : mm

## ■ Specifications

Model	KDS8113BW	
Pass height	75 mm	
Maximum pass width	300 mm	
Detection sensitivity <sup>1</sup>	Fe sphere	0.4 mm dia
	SUS304 sphere	0.7 mm dia
Belt width	230 mm	
Display	7-inch color TFT LCD	
Operation method	Touch panel (Start, Stop, and Home are direct push buttons)	
Preset memory	Maximum 200	
Belt speed	10 to 90 m/min (variable speed depending on Product No.)	
Maximum product weight <sup>2</sup>	5 kg [BW (Waterproof) types can support up to 15 O. However, the belt speed is 5 to 49 m/min]	
Power requirements	100 to 120 Vac +10% -15% or 200 to 240 Vac +10% -15%, single phase, 50/60 Hz, 200 VA, rush current 62 A (typ.) (20 ms or less)	
Mass	102kg	
Environmental conditions	0° to 40° C, relative humidity 30% to 85%, non-condensing	
Protection class	IP66 compliance	
Exterior	Stainless steel (SUS304)	
Data output	USB port as an option (USB2.0), Ethernet interface as an option (10BASE-T, 100BASE-TX)	

1: Detection sensitivity for actual use may vary depending the type of contaminants, the physical property of product (temperature of goods, content, and shape).

2: Sum total of product weight on the conveyor.

## Detection areas

Each series features a variety of detection areas to suit a wide range of products. For details of specifications, please submit an online inquiry form.

		Pass height (mm)					
		50	80	100	120	130	180
Non-waterproof type		50	80	100	120	130	180
Waterproof type		45	75	95	115	125	175
Pass width (mm)	210	⊙	⊙	⊙	⊙	⊙	⊙
	300	⊙	⊙	⊙	⊙	⊙	⊙
	450	⊙	⊙	⊙	⊙	⊙	⊙